



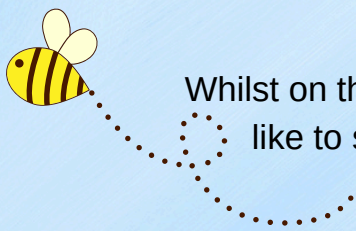
# PTFA Newsletter June 2025

## Sponsored Walk

What a fantastic achievement by all the children who attended the sponsored walk this week. The children's determination and enthusiasm were evident throughout the entire day. Helped along by Mr L who did every lap with the children for each class, amounting to 90 laps in total! With the sun shining, music to keep up the motivation and flashes of red in honour of the British Heart Foundation it really was a perfect day. We hope every child feels incredibly proud of themselves and have brought their certificates home to celebrate their achievements with family and friends who supported them with sponsorship.

The Sponsored walk has raised an incredible £3246 to date. This not only reflects the children's remarkable efforts but the wonderful support they have from their family and friends. As advertised prior to the event 10% of all money raised will be donated to the British Heart Foundation. The remaining money will be invested in various ways, one being enhancing sports provisions within the school. So watch out for future updates as to what a massive difference this sponsored walk will make to every child's experience within school.





Whilst on the subject of enhancing the children's experiences the PTFA would like to share what they have been busy with over the half term break.

## Elms outdoor area

Elms outdoor space has truly been transformed into a vibrant, welcoming area for the children to enjoy. What was once a relatively dull outside space has been transformed into a secluded garden with beautiful planting to enhance the senses and encourage wildlife to flourish.

The children of Elms class now have a secure outside garden with purpose built seating, table and parasol. They have a new lego station, several planting areas to grow herbs and a peaceful, sensory nook for times when the children just need some space to relax.

See the before and after photos of this wonderful transformation. This is another area transformed for the children to enjoy.

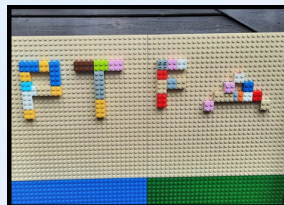
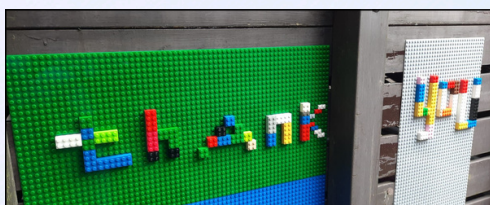
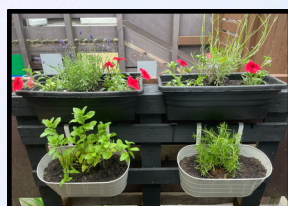
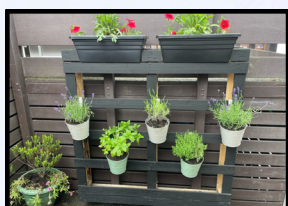
Before

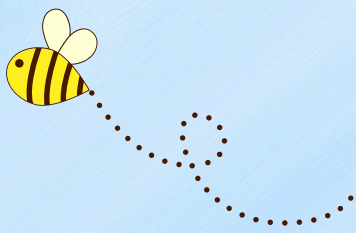


As with the recent transformation of the Willows outdoor space, these projects could simply not happen without the unwavering support of the school community.

The support with events and fundraising make these visions into a reality.

There are plenty more plans for the future, including a bespoke, sheltered, outdoor classroom area to accommodate an entire class for outdoor learning. A renovation of Acorns outdoor space and enhancing the spiritual garden. In addition to this the PTFA remain dedicated to enhancing IT provisions within the school.





## Future Fundraising .....

This term is a busy one with the Summer Fete next on the list. The PTFA have been working hard to make this a great day for the children. If you haven't seen it already, tickets are available for the inflatable slide. With limited capacity there are only 38 available tickets left. If you want to secure your child's ticket before the day please purchase in advance as there may be no available tickets left on the day.

In addition to the inflatable slide, raffle tickets are on sale and a set should have come home with your child. If you need anymore please just ask the school office. Please can all tickets be returned to the school no later than Friday 20th June. For all spare tickets to also be returned so they can be reused.

In addition to the great prizes already announced in the raffle poster we are excited to update that the following prizes are now also on offer:

- Eurotunnel voucher for short stay crossing
  - £30 voucher for the Cider Works
- Family tickets for Imagine Soft Play
- £25 voucher for Grovewell Garden Centre
  - Solley's Farm Gift Voucher

Raffle tickets and Barrow of Booze tickets will also be available on the day of the Summer Fete.

Kind Regards

## The PTFA

